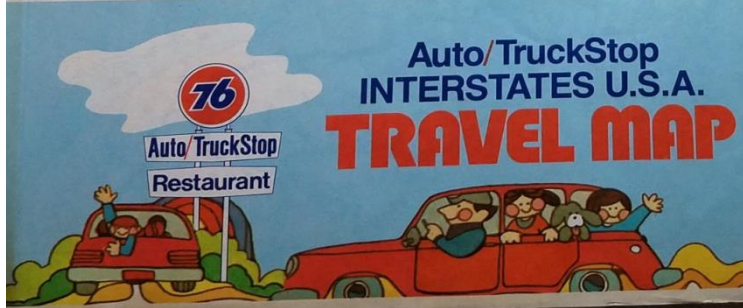


## Section 4      Truck Stop maps

### Truck Stops locations on Oils



Most Truck Stops are now called Travel Centers  
All maps cover the whole marketing area or US except Sohio, Texaco, & Union 76 as noted.  
Sinclair and Pure started in 1954 and Love's last map was made in 2018.

Am\*Best            2016-US map in booklet-cobranding Circle K, Valero, Shell, & Sunoco

#### Champlin (1967)

HM Gousha lists 1967 Truck Stop map.

I have never seen. They marketed from CO to IN & KY and from MN to OK at the time.

#### Conoco (1959-1970)

1959-1962, 1968-1970-US (1 station in Emo, On, Canada-N of Mn)

Douglas-(69-70)-Ca, Nv      Western/Mileage/DS-(69-70)-Nd, Sd, Mn, Ia, Wi

Conoco-(59)-no truck stops in Wy, Al, lower-Mi, or panhandle-FI



^ 1959



^ 1969



^ 1970

(All 3 by Gousha)



^ 1959, 61, 62 Conoco Truck Stop maps (HM Gousha)  
 Marketing area in white (e-Wa, e-Or, Id, Mt, Nd, Sd, Mn, Wi, lower-Mi,  
 Ut, Co, Ne, Ks, Ia, Mo, Il, In, Ky, Tn, ne-Az, Nm, Tx, Ok, La, Ar, La, Ms, Al,  
 panhandle-Fl.

Flying J 2000-2010 map in booklet



^ Winter 2005-06 Flying J US/Can Travel Plazas Map

Fuel-Mart (1998-2010)  
 1998-2004 and 2010 directory has simple, basic map

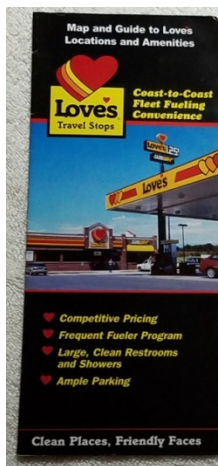
Gulf (1963) 1963 Directory-no map

Love's (2001-2018)

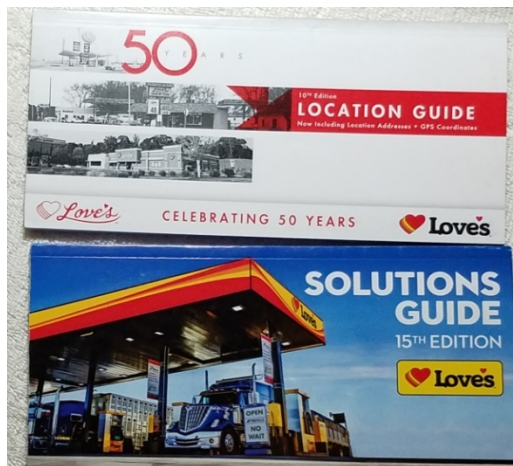
2001-2018 simple US map (Location & Solutions Guide) 450+ truck stops in 41 states-building 30+/year



2001 (Southern) US map



2005



^ top-2014

bottom-2016



Love's 2018 Solutions Guide, Travel stop map inside booklet)



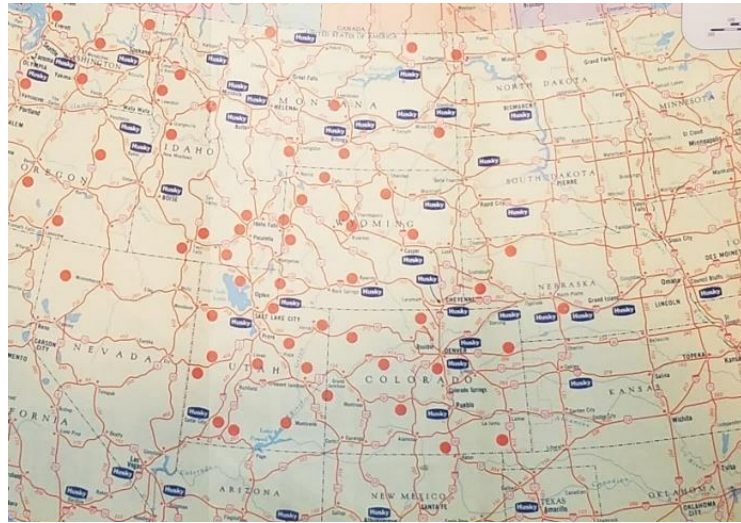
2018 front cover-"Final Edition"

Husky (1978-1980)

3/76, 78 International directory (US/Can) & 1980-Canada map-all list US & Canada stops  
Car/Truck Stops-(78 )-Yt, Bc, Ab, Sk, Mb, On (Can); Wa, Or, Id, Mt, Wy, Nd, Sd, Nv, Ut, Co, Ne,  
Barstow-Ca, n-Az, nc-Nm, mw-Tx; Truck Stops-(80)-new Council Bluffs-Ia Goodland-Ks



^ 1978 US/Can cover



^1980 Canada Truck Stop map [US portion] (Rolph McNally)

Kwik Trip (1991-2014)

1991 map, 2012, 14

Petro (2002-2010)

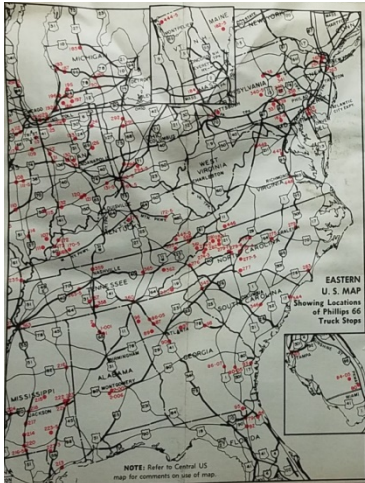
2002, 07, 09, 2010

TA & Petro Stopping Centers merged in 2007  
Run separately until approx. 2011.



^ 2010 Petro US Map

Phillips 66 (1966-1970)



<1969 Phillips 66 Truck Stop dir (Eastern US portion)

1966 Directory-no map, 1969 & 70-US Map in booklet

Pilot/Flying J (2012-2015)

2012, 13, & 2015 directories with state maps. 2012-RV Guide with Good Sam Club. 750 truck stops in 43 states & 6 provinces (2018).

Pure (1954-1969)



60 ND to FL (RMcN) 63-dir.-no map 65-ND to FL (RMcN) map in back cover pouch

^Picture of Sunshine St. Pkwy. station



67 ND to FL

69 US map

68 Truckstop (ND to FL)-all 3 by RMcN

1954-FL only, 1957-1969 (60 & 63-maps in booklet, 1964-69-folding maps)

Atlantic-(63)-Ma, Ct, Ri, Oh, Ny, Nj;

Flying A-(63)-Wa, Or, Id, Ca, Nv, Az; Me, Vt, Ma, Ct, Ny, Nj, Va

Skelly-(63)-Nd, Sd, Wy, Co, Ne, Ia, Il, Ks, Nm, Ok, Tx, La

Pure-(65)-new De, Sd, (67)-new Md, Tx (68)-new Pa

Richfield (~1962)

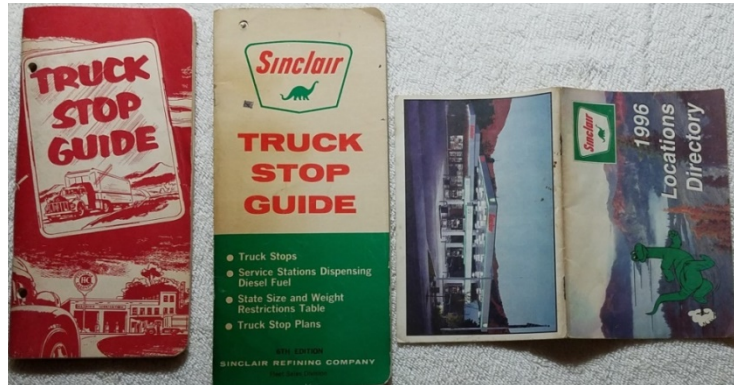
~1962 Truck Station-directory-Wa, Or, Id, Ca, Nv, Az

Road Ranger ~2008 simple map

Shell (1968-1973)

1968, 1973 maps

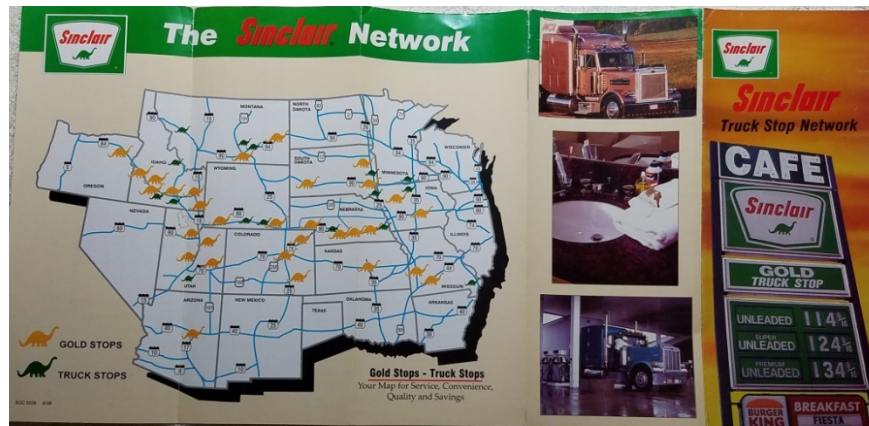
Sinclair (1954-1998)



8/55-dir

~61-dir

96 (all) Locations (inc. truck stops) (all 3 have no maps)



6/98 map

8/54-(1<sup>st</sup> ed), 8/55, 8/57, ~61 Truck Stop directories-no maps on any of these.

1996 Locations (directory)-no map-complete list all Sinclair stations with truck stops printed in **bold**.

6/98 Truck Stop Network map

Sinclair-(54-61)- W US-no Wa, Or, Ca, Nv, Az, Mt; C-US-no Nd, Sd; E US-no-Me, Nh, Vt, Ct

Richfield-(54-61)-Wa, Or, Nv; Ma, Ct, Fl

Sinclair-(96, 98)-nc-Az, Co, Id, sw-Mo, Mt, Me, nc-Nd, ne-Or, Wy

Skelly, Getty (1968-1984)

Skelly

1968 & 1984 Directories-state maps with locations (no US map-no mapmaker given).

Affiliated Truck Stops (68)-Atlantic, DX, Getty, & Richfield (West)

1978/79 & 1980/81 booklet

Skelly states (80)-Nd, Sd, Mn, Wi, Wy, Co, Ne, Ks, Mo, Ia, Il, Nm, Tx, Ok, Ar, La, Ms.

NTS Canada-(80)-Golden Eagle-Qu, Ultramar-On, Qu;

NTS affiliates-(80)-Agway-Pa; Arco-Mo; Bay-Fl; Champlin-Co, Sd, w-Mn, Ok, Ks, Mo, Ia, In, Ky;

Derby-Ne; Fina-Ks, Mo, Tx, Ar, Fl; Fleet Wing-In; Kerr-McGee-Sd, Nm, Tx;

Pennzoil-In, Oh, Wv, Ny; Sinclair-n-Az; Spur-Mn, Fl; Vickers-Ne



78-79 Truck Stop dir 80-81 Truck Stop dir 84 Getty Truck Stop dir

Getty (formerly Skelly) (1984)

1984 booklet-new eastern Getty states-Mi, Me, Ny, Nj, De, Md.

NTS Canada (84)-Ultramar-Thunder Bay-On, Newfoundland;

NTS affiliates-(84)-Arco-new Ne; Champlin-Co (80) now a Skelly; Flying J-Id;

Kerr-McGee-Mo; Spur-new Al; Tesoro-Ak; Vickers-Ne now a Apco

Sohio (1970-1985)

1970-1985-OH maps, Sohio & Boron E US maps-71-74, 76-77, 81

Standard (IN), American, Amoco (1959-1982)

Standard Oil (IN)

8/59, 5/60, 61, 62/63, 63/64, 64/65, 66-69, 72, 73/74 (Std (IN) stops only 59-60)

American 1967, 69, & 72 maps

Amoco 1976-77, 82 maps

Amoco/American states-(61-77)-Wa, Id, Nv, Ut, Nm, Me, Ct, Ny, Nj, Pa, De, Md, Va, Nc, Sc, Fl  
Ar, La, Ms, Al, Ky, Tn

Chevron states-(73-77)-Wa, Or, Id, Ca, Nv, Az, Nm, Tx-nw&nc (nw-Amarillo-Temple-El Paso)



^8/59 (N C US)

^61 US

^(8/ 63) 63/64 US

^66 (RRD)

1959-1964 maps by RMcN



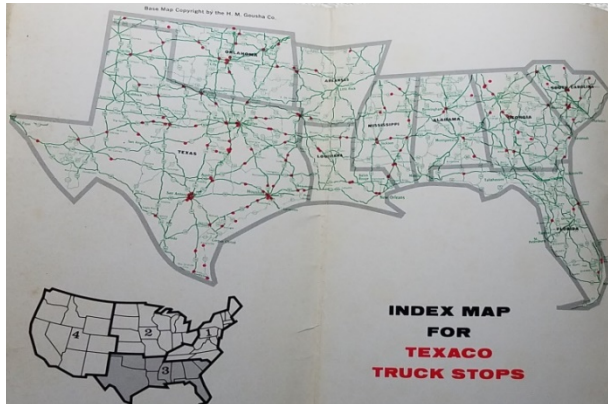
^ 67 American Trk Stop [back cover] (RRD)    ^ 69 Std Truck Plaza [back cover] (RRD)    ^ 73-74 Std Trk Stp (Diversified/Tempo)    ^ 77 Amoco Trk Stop (Western Publishing)

T/A-Truckstops of Am (1978)  
1978 Rd. Atlas

Truckstops of America/Burn Bros (1996)  
6/96 brochure-simple US map. Now TravelCenters of America

TA/Petro            2013 small US map in booklet    223 truck stops in 43 states & 1 province (2018).

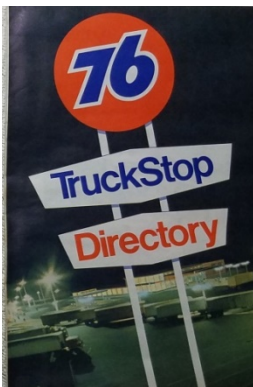
Texaco (1964)



< 1964 Texaco (SE US) Truck Stops (HMG)

1964 Four regional booklets, 75-US directory-no map-none in VT/RI/HI

Union 76 (1970-1985)



< 1970 Union 76 US TruckStop map (RMcN)





^ 1972 Union 76 US Truck Stop map (RMcN)    ^ 1984 MN (RMcN)  
 Same cover 73-76 US Truck Stop map (RMcN)  
 Same cover 78-86 Union 76 & 86 Unocal 76 US Truck Stop map (RMcN)

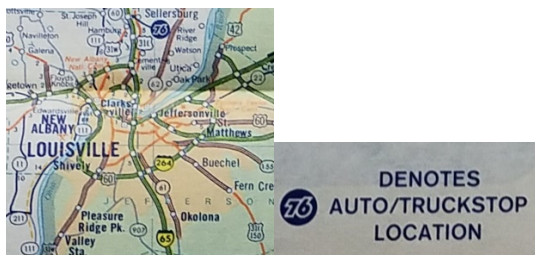
(1970-1985)

1970, 72-73, 75-76, 78, 11/79, 82-86-US maps, US Rd Atlas-1977, 78, 80, & 82

Union 76-(70)-adding Union 76 Truck Stops in Wa, Or, Ca, Nv, Az, Mt, Okla. City, & w-Tx.

Many 1978 state maps show truck stops (see below) using blue "76" with white outline inside solid blue ball. (72)-no-Id, Nd, Sd, Co, Wv, New Engl; (73)-new-Or, Nv, Ut, Co, Ks; (76)-new Ct; (79)-new-Sd

Franchise dealers-(70-71)-American-Az, Mt, Nv; Arco-Ca, Co, Nv, Wa; Champlin-Ks, Mo;  
 Chevron-Me, Nj; Deep Rock-Ks; Enco-Nv; Fina-Tx; Getty-Md; Husky-Or, Nd, Sd;  
 Franchise dealers-(83)-Beacon-Ca, Tx, Husky-Or, Ut, Wy, Nd, Ks; Flying J-Nd



<1984 Union 76 Indiana map (RMcN)

1978 state maps showing truck stops: DE/MD/VA/WV, IA, IL, IN, MN, MO, ND/SD, NJ, NY, OH, and WI.

1979 state maps showing truck stops: CA, MN, WA/OR.

Unocal 76

1986, 88, 90    (88)-still no-Nd, New Engl-x Ct

Franchise dealers-(88)-Apco-Ks, Deep Rock-Ks; Husky-Mt, Wy, Ut



<1988 Unocal 76 TS booklet

Wilco (~1965-1972)

Basic maps made mid 1960s, 1972, & 2001      Most E Coast Wilco Hess sold to Flying J in 2015.

Williams (~1998)

Late 90s brochure/map

Alaska stations sold to Holiday.

Maps and atlases that list multiple Truck stop by brand:

Mid Continent Truck Stop Guide 1971 US/Canada map lists 43 brands: *American, Arco, Atlantic, BP, Boron, Champlin (Co, Ia, Ks, Ok, & Sd), Chevron, Citgo, Clark, Conoco, DX, Derby, Enco, Esso, Fina, Fleetwing, Frontier, Gulf, Husky, Keystone, Lion, Mobil, Phillips 66, Plateau (Az), Pure, Shamrock, Shell, Sinclair, Skelly, Sohio, Std (IN), Std Oil (KY), Sunoco, Superior (Ore.), Tenneco, Texaco, Texgas (Tx), Tresler, Trico (Col.), Union 76; Canada-BP, Chevron, Esso, Gulf, Husky, Irving, Shell, Texaco*

1972/73-Mid Continent Truck Stop directory-Agway (*Ny, Wv*) , *Arco (In, Md, Pa, Oh, Tn, Tx) Champlin, Getty (Mn, Ne) K-M, Malco (Nm) Pennzoil (Oh), Seago (La), Silco (Co), Spur (In), Tesoro (Ak, Wv), Ultramar (On)*

Family Motor Coach Ass'n. 2017 (medium size) Road Atlas (9<sup>th</sup> edition) has locations of Flying J/Pilot, Love's, Walmarts, Sam's Clubs, and Cracker Barrel restaurants.

Love's 2018 Solutions Guide (map/booklet) front cover states Final Edition.

See Sections 1 and 2 for details and symbols

Note--Recent Michelin US Road Atlases show "TC" symbol for Travel Centers-No brands listed.